



Title:

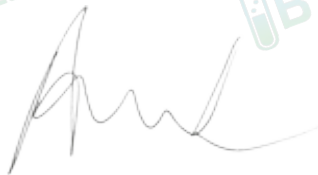
## Certificate of Analysis (CoA)

**Date:** 4/20/2026  
**Date Tested:** 4/17/2026  
**Customer:** BW Compounds  
**Testing material:** Glutathione  
**Lot Number:** BWC-G1500-321  
**BT Sample ID:** 005000039656173  
**Labeled Peptide Content/Potency:** 1500 mg  
**Storage:** R.T.  
**Visual Description:** Large amber vial: white sample, white label, silver crimp, black plastic cap.  
**Labeled as:** Glutathione  
**Manufacturer:** N/A  
**Testing Purpose:** FTIR and HPLC analysis for the identification, purity, potency and composition of a peptide product. It does not provide information on particulate matter, microbial contamination or presence of endotoxins.



Test	Method	Specification	Result
General Appearance	USP <630>	white powder	white powder
Mass	USP <41>	As recorded	1669.7 mg
FTIR Identification and Composition Analysis	USP <197A>	Sample spectrum should confirm the content of peptide via characteristic bands	FTIR sample spectrum confirms the presence of Glutathione with addition of excipient(s)/fillers.
HPLC Purity of Peptide Assay	USP <621>	Specifications: $\geq 98\%$	99.7 %
HPLC Potency Assay	USP <621>	Specifications: 90 – 110% of 1500 mg	1318.5 mg (87.9 %)
Peptide-to-Excipients Ratio	USP <1151>	Recommended ratios of (1:2) to (1:10) for (peptide: excipients)	1318.5 : 351.2 mg (1:0.3)

The results of the CoA relate only to the item(s) tested and applied to the sample as received.



Andrea Castro, AS  
Scientist-II  
BTLabs



Verna Zheng, AS  
Scientist-II  
BTLabs

5730 Corporate Way | Suite 220 | West Palm Beach, FL 33407  
Phone: (561) 625-0133

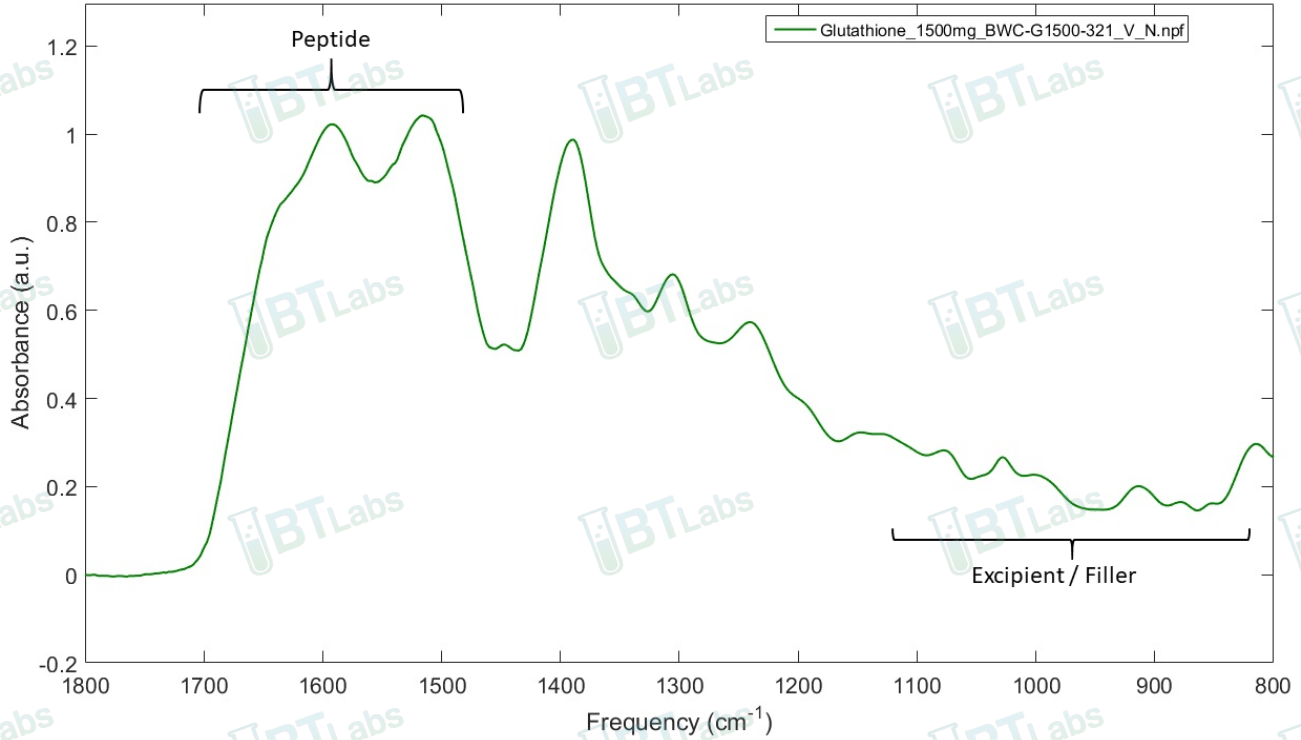
E-mail: [info@btlabtesting.com](mailto:info@btlabtesting.com) | Website: <https://btlabtesting.com>



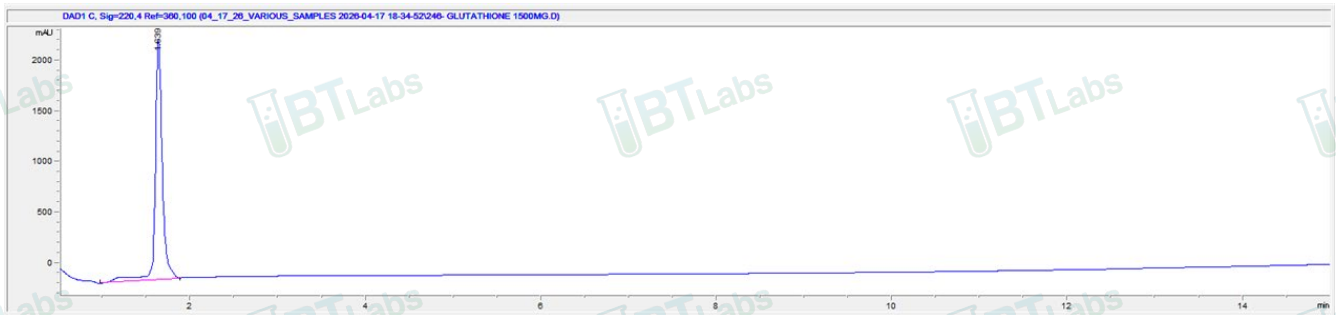
Title:

## Certificate of Analysis (CoA)

### FTIR ID and Composition Analysis: Glutathione Lot BWC-G1500-321



### HPLC Purity and Potency Assay @ 220 nm: Glutathione Lot BWC-G1500-321



#### Glutathione Lot BWC-G1500-321 @ 220 nm

Peak #:	Retention Time (min)	Area (mAU*s)
1	1.639	13805.5

5730 Corporate Way | Suite 220 | West Palm Beach, FL 33407  
Phone: (561) 625-0133

E-mail: [info@btlabtesting.com](mailto:info@btlabtesting.com) | Website: <https://btlabtesting.com>