



Title:

Certificate of Analysis (CoA)

Date: 4/20/2026
Date Tested: 4/17/2026
Customer: BW Compounds
Testing material: Tirzepatide
Lot Number: BWC-T40-6745
BT Sample ID: 005000039656146
Labeled Peptide Content/Potency: 40 mg
Storage: R.T.
Visual Description: Small clear vial: white sample, white label, silver crimp, clear yellow plastic cap.
Labeled as: Tirzepatide
Manufacturer: N/A
Testing Purpose: FTIR and HPLC analysis for the identification, purity, potency and composition of a peptide product. It does not provide information on particulate matter, microbial contamination or presence of endotoxins.



Test	Method	Specification	Result
General Appearance	USP <630>	white powder	white powder
Mass	USP <41>	As recorded	64.7 mg
FTIR Identification and Composition Analysis	USP <197A>	Sample spectrum should confirm the content of peptide via characteristic bands	FTIR sample spectrum confirms the presence of Tirzepatide with addition of excipient(s)/fillers.
HPLC Purity of Peptide Assay	USP <621>	Specifications: $\geq 98\%$	99.6 %
HPLC Potency Assay	USP <621>	Specifications: 90 – 110% of 40 mg	42 mg (105.1 %)
Peptide-to-Excipients Ratio	USP <1151>	Recommended ratios of (1:2) to (1:10) for (peptide: excipients)	42 : 22.7 mg (1:0.5)

The results of the CoA relate only to the item(s) tested and applied to the sample as received.



Andrea Castro, AS
Scientist-II
BTLabs



Verna Zheng, AS
Scientist-II
BTLabs

5730 Corporate Way | Suite 220 | West Palm Beach, FL 33407
Phone: (561) 625-0133

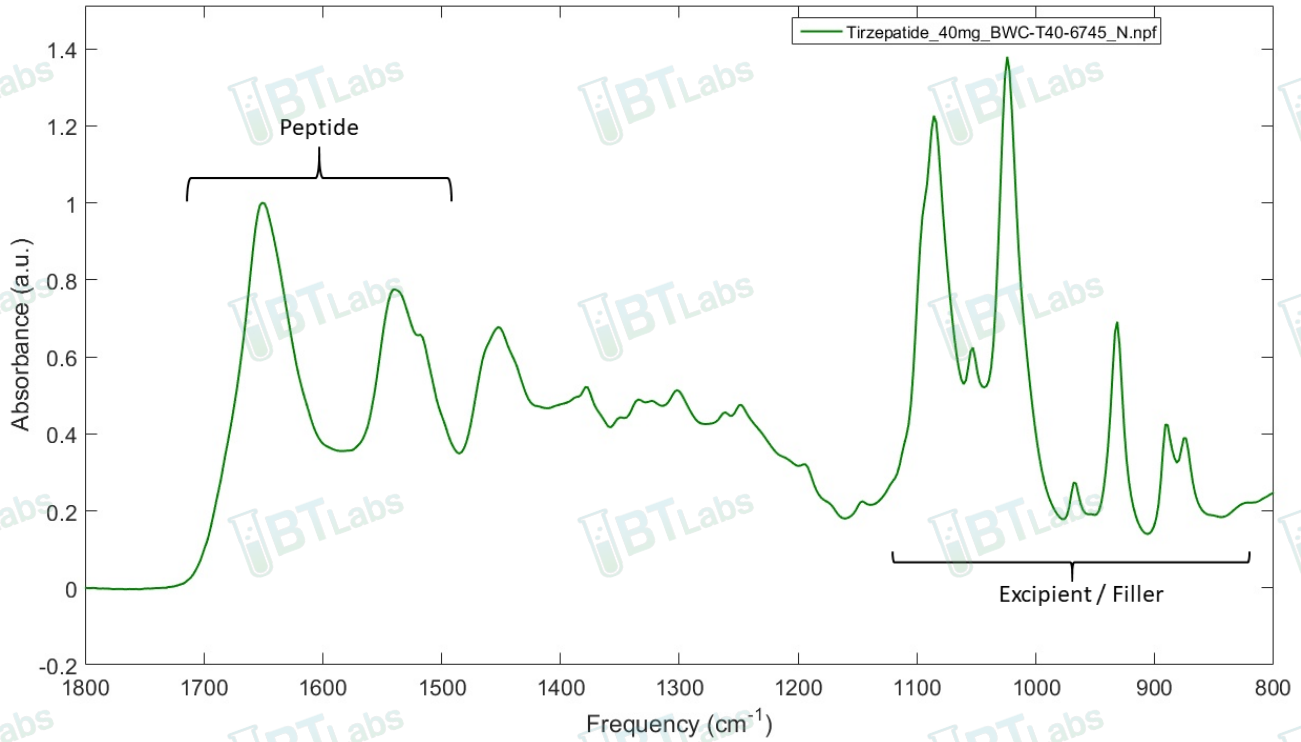
E-mail: info@btlabtesting.com | Website: <https://btlabtesting.com>



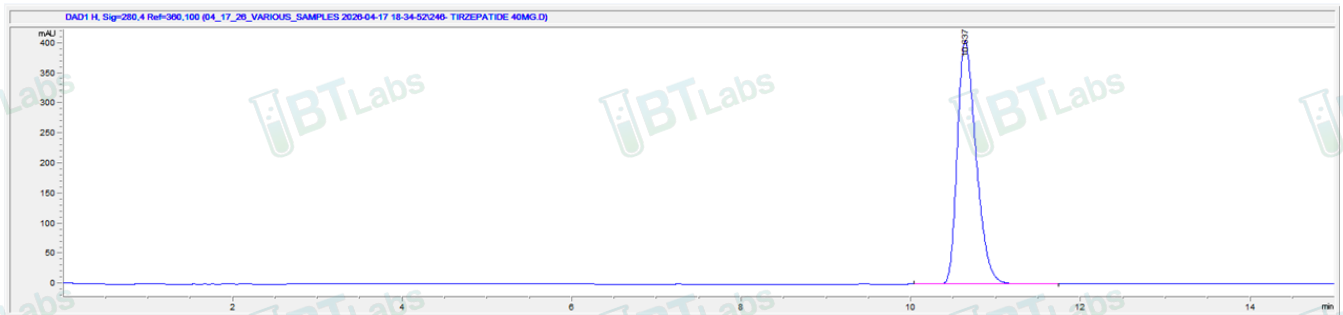
Title:

Certificate of Analysis (CoA)

FTIR ID and Composition Analysis: Tirzepatide Lot BWC-T40-6745



HPLC Purity and Potency Assay @ 280 nm: Tirzepatide Lot BWC-T40-6745



Tirzepatide Lot BWC-T40-6745 @ 280 nm

Peak #:	Retention Time (min)	Area (mAU*s)
1	10.637	6215.1

5730 Corporate Way | Suite 220 | West Palm Beach, FL 33407
Phone: (561) 625-0133

E-mail: info@btlabtesting.com | Website: <https://btlabtesting.com>